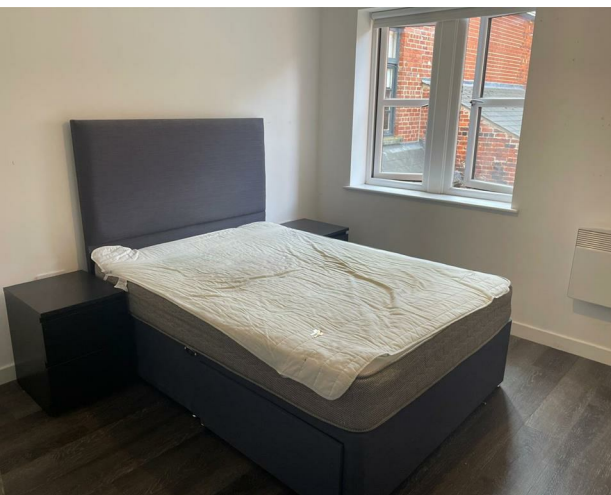


Flat 3, 20A Hyde Terrace, Leeds, LS2 9LN  
£3,250 Per month

**V&L**  
PROPERTIES

A close-up of a smiling woman with long brown hair, wearing a grey cardigan and blue jeans, holding a white mug. The background is a blue gradient with a faint floral pattern.

# GO ALL IN

on an all-inclusive  
utility package.

- 
- 
- 
- 
- 

Flat 3, 20A Hyde Terrace, Leeds, LS2 9LN

£3,250 Per month

Council Tax Band: C

Property Features:

Spacious and well-presented reception room, ideal for relaxing or entertaining

Living room includes a 50-inch TV

Comfortable private bedroom offering both privacy and practicality

Modern en-suite bathroom for added convenience

Modern fitted kitchen with practical storage and workspace

Bright and welcoming living space throughout

Rent: £125 pppw





22 Regent Street  
 Leeds  
 LS2 7QA  
 01133 225737  
[info@vgl-properties.co.uk](mailto:info@vgl-properties.co.uk)  
[vgl-properties.co.uk](http://vgl-properties.co.uk)

